



PUNE Metropolitan Region Development Authority(PMRDA)

PMRDA - Help File for Forgot Password

PMRDA Lottery – 2022

PUNE METROPOLITAN REGION DEVELOPMENT AUTHORITY
 पुणे महानगर प्रदेश विकास प्राधिकरण

☎ Helpline: No.02262531727 मराठी
 (10 AM - 6 PM)

★ New Lottery for PMRDA Is coming s

Register For Lottery | Accepted Applications | Important Dates | Help Manual | Video Help

PMRDA LOTTERY 2022

3 Simple Steps to Apply for PMRDA Lottery

- 1 Registration**
Create Username
Fill Basic Information
- 2 Online Application**
Lottery and Scheme
Print acknowledgement
- 3 Payment**
Online Payment

[Register](#)

Login

ABCD EFGHIJK123

Password

4yd4n

Please Enter above Code *

4yd4n

[Login](#) [Forgot Password ?](#)

Q Lottery Information

- ★ English Help File
- ★ Marathi Help File
- ★ Forgot Password Help File(English)
- ★ Forgot Password Help File(Marathi)
- ★ Lottery Booklet

Schemes at PMRDA

- PC-3 - SECTOR-12-SCHEME-EWS
- PC-4 - SECTOR-12-SCHEME-LIG
- PC-5 - Sector-30-32-Scheme-EWS
- PC-6 - Sector-30-32-Scheme-LIG

Latest News

New Lottery for PMRDA Is coming soon

Copyright © PMRDA © 2022. All Rights Reserved

Powered by PMRDA & ProbitSoft Pvt Ltd.

Click here to Login Page

Fig. No.: 1

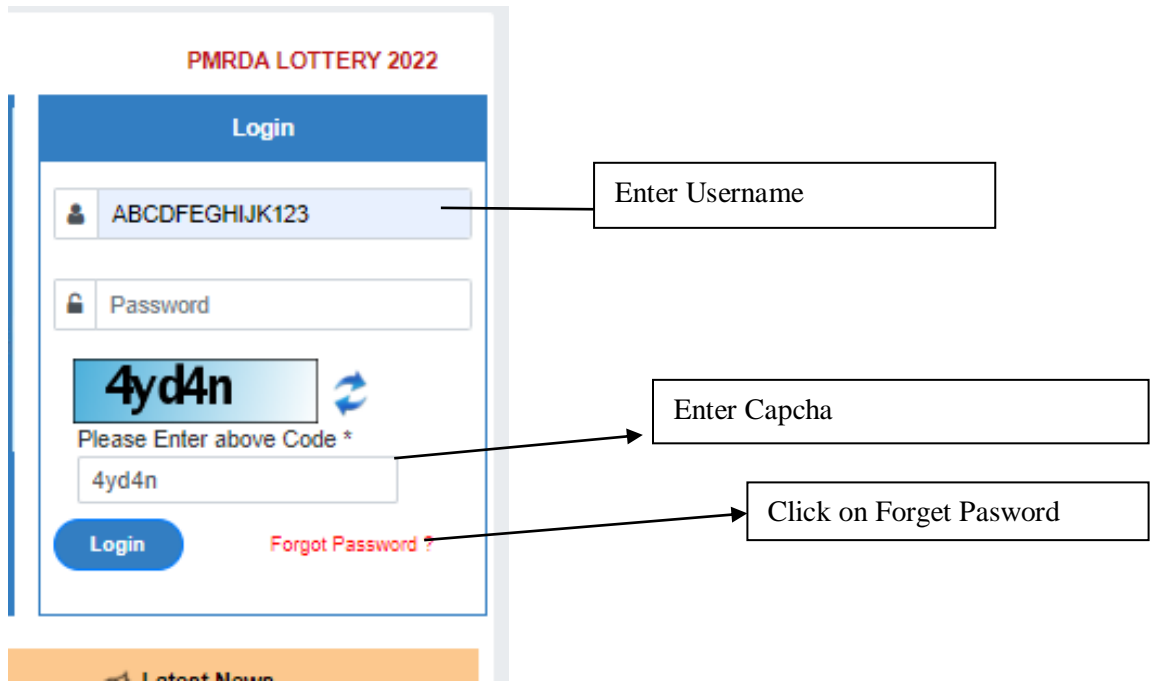


Fig. No.: 2

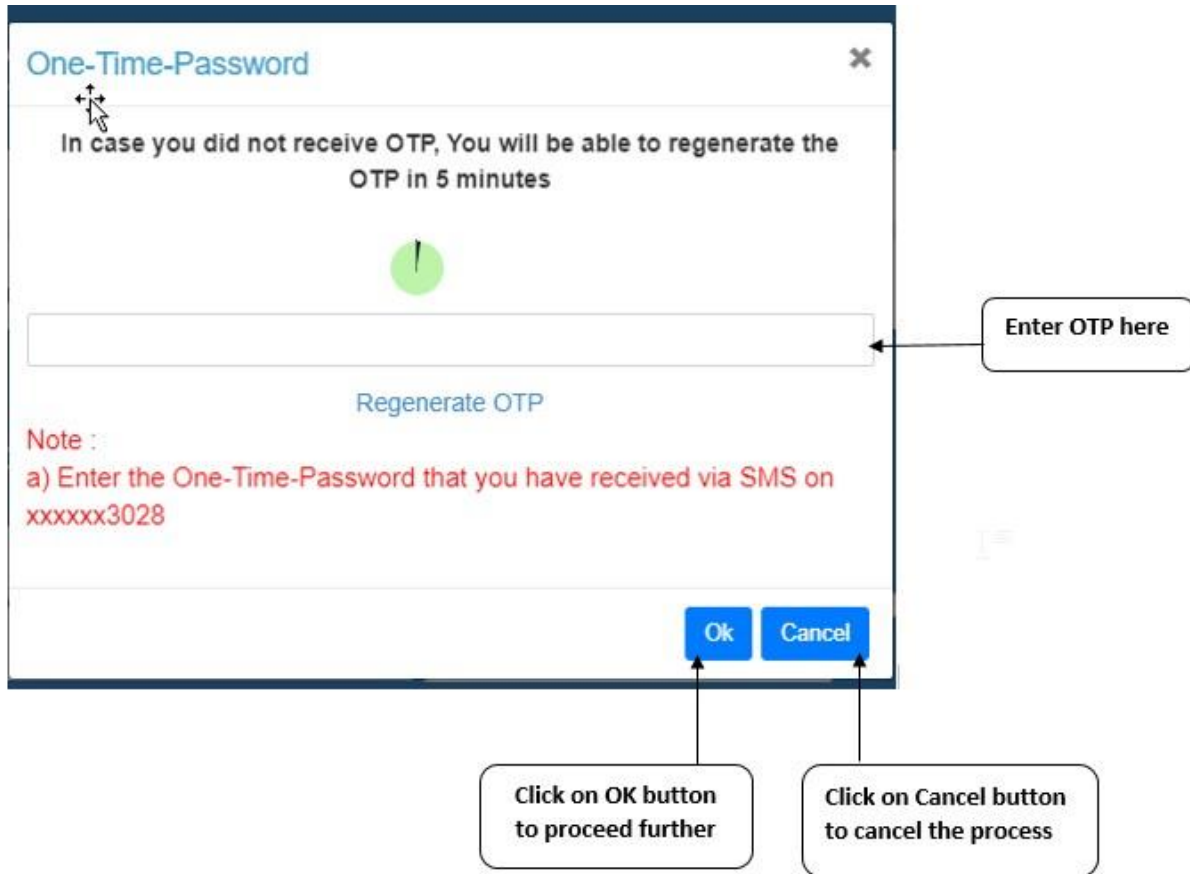


Fig. No.: 3

The image shows a 'Reset Password' form with the following fields and buttons:

- User Name:** A text input field containing 'KRANTI.PATIL'.
- Date of Birth:** A date selection field with a calendar icon.
- New Password:** A password input field with a lock icon.
- Confirm Password:** A password input field with a lock icon.
- Buttons:** A blue 'Save' button and a red 'Cancel' button.

Annotations with arrows point to the following elements:

- Select Date of Birth here:** Points to the Date of Birth field.
- Enter your New Password here:** Points to the New Password field.
- Enter your New Password here:** Points to the Confirm Password field.
- Click on Save button to proceed further:** Points to the Save button.
- Click on Cancel button to cancel the process:** Points to the Cancel button.

The image shows a 'Reset Password' form with a modal overlay. The modal, titled 'Password must meet the following requirements', lists five criteria, each with a red 'X' icon indicating a failure: 'At least one letter', 'At least one capital letter', 'At least one number', 'At least one special character', and 'Should be at least 8 characters'. The form includes fields for 'User Name', 'Date of Birth', 'New Password', and 'Confirm Password', along with 'Save' and 'Cancel' buttons.

Fig. No.: 4

Your password has been reset successfully.